

Along the Journey

Summer 2016

A NEWSLETTER FOR THE COMMUNITIES AND FRIENDS OF BAPTIST HOMES SOCIETY

BAPTIST HOMES & MANOR PROVIDENCE POINT BAPTIST HOMES FOUNDATION BAPTIST HOMES SOCIETY

Baptist
HOMES
SOCIETY

Message from
Al Allison, Jr.,
President & CEO
Pg. 2

Campaign
announcement
at annual donor
recognition event
Pg. 4

A gift of stained
glass for
a chapel
Pg. 5

Annual Benefit
Golf Outing
Recap
pg. 12

Congratulations to
our MVPs
pg. 13

Donor
recognition
Pg. 14



(above) Rendering of the "Crawford," one of six new floorplans in Phase II; (left) The site of the future Phase II tower.

Phase II plans move ahead quickly

New tower's open floor plans and views appeal to active area seniors

On June 16, 2016, Al Allison, Jr., President and CEO of Baptist Homes Society, announced the Phase II expansion of Providence Point, Pittsburgh's premier senior living community.

Mr. Allison stated, "Since opening in 2009, Providence Point has built a solid reputation for the high quality amenities and wellness programming we offer. We've enjoyed occupancy levels that have hovered around 95 percent for the past few years. Some of our more popular models have waiting lists. So, the expansion will help us meet the growing demand for quality, person-centered senior living."

Phase II was on the blueprints of the original Providence Point development and now the plans for the five-story tower will come to fruition. A third residential tower, added parking, a new non-denominational chapel, a connecting hallway to the conservatory area, and an enlargement of existing dining and kitchen areas are all part of the building plans.

Eighty new apartment residences will be housed in the tower, and there will be added parking spaces both underground and outdoors.

Providence Point offers resort-level amenities and a wide array of residences to

(continued on pg. 3)



*Alvin W. Allison, Jr.
President & CEO
Baptist Homes Society*

A message from the President

obstacles throughout our first century of service, and has always met them by maintaining our focus on our mission, vision, and values. Though at times we reminisce about the simpler, gentler past, we are excited about what the future holds. Our mission...“To provide the highest quality for all those we serve, while uplifting one person at a time”... continues to guide us.

At the present time, the most exciting change is that we are moving forward with Phase II at Providence Point, the development of a third apartment tower which will add 80 new apartments to our Providence Point campus. As this goes to press, we have begun taking reservations, and already 10 apartment residences have been reserved.

As you’ll also read in this issue, Baptist Homes Foundation is moving full speed ahead with a capital campaign to fund the building of a chapel at Providence Point and to endow our chaplaincy program. This is something our Board of Directors and our current residents feel very strongly about. It helps reinforce the connection between our current person-centered philosophy and our faith-based origins.

Finally, our legacy of quality care lives on every day. We are proud of our high ratings from CMS, as well as

regional insurance providers and hospital organizations. We are also pleased with the very positive responses we receive from our satisfaction surveys and the generous compliments from our residents and their families, all of which are a testament to our wonderful and dedicated Baptist Homes Society staff, many of whom have worked with Baptist Homes Society for decades.

These are the daily reminders that help us stay focused on our vision for the future where every senior can experience the most fulfilling life possible.

With God’s blessings, and your continued prayers and support, we will continue to move forward to achieve this vision and hope you will come along for the journey. 🌿

Along the Journey

is published three times a year for friends of Baptist Homes Society and its communities: Baptist Homes and Providence Point. Baptist Homes Society is a not-for-profit 501(c)3 organization serving people of all faiths since 1910.

Jan O. Wenzel
Chair, Board of Directors

Al Allison, Jr.
President & CEO

Marilyn Walsh
Editor/Writer

Jeremy Eichenlaub
Public Relations Intern

Erin E. Engel Dionne Rose
Contributors

Jack Miller
*Vice President for Development
Baptist Homes Foundation*

Moving forward to achieve our vision

These are challenging times for senior living and healthcare providers. In the past few years, we have seen more changes than possibly any other time in recent history. New laws, regulations, standards, and guidelines have mandated substantial changes for senior living and care providers. In addition, advancements in technology have brought additional challenges as we enter an era of electronic health records, digital information sharing, new reporting methods, and innovations like telehealth.

While these challenges are significant, they are not overwhelming. Baptist Homes Society has faced many

Our mission

Our mission is to provide the highest quality of living for all those we serve, while uplifting one person at a time.

Our vision

Our vision is that seniors in our community will experience the most fulfilling life possible.

Our values

Our values represent the philosophy that guides our organization. These values are Faith, Benevolence, Service, Ethics, and Wellness.

Phase II plans moving ahead

(continued from pg. 1)

meet the individual preferences and needs of the residents.

The upcoming expansion will allow even more seniors to take advantage of the security, peace of mind, and focus on wellness that the community has to offer.

Currently, Providence Point is accepting deposits for those interested in reserving a home in the new tower. Marketing Counselor Claudia Scheibel stated, "This is the time to get in on the 'bottom floor'

to assure that the home style you want is available when construction is completed in a few years."

There are also a few select patio homes and apartment residences available within the current inventory. Informational luncheons are normally held twice monthly and those interested in learning more, can call the Providence Point marketing department at 412-489-3550 or visit ProvidencePoint.org.



The Crawford, one of six new floorplans, is already a popular selection.

Foundation receives legacy gifts

Baptist Homes Foundation has now received three gifts in excess of \$100,000—all irrevocable pledges of some or all of a Providence Point resident's entry fee refund. Two of the donors wished to remain anonymous, but **Dr. Jan and Jeanette Smith** were honored to share their strategy. They have pledged \$100,000 of their entrance fee refund to the capital campaign to build a chapel at Providence Point and endow the Baptist Homes Society chaplaincy program. They've also allocated another \$50,000 to create a scholarship fund for Baptist Homes Society dining services employees to continue their education after high school.

Natives of South Africa, the Smiths immigrated to western PA following postgraduate studies and training in Boston and Pittsburgh. They subsequently relocated to a number of academic institutions before returning to Pittsburgh in 1987, where Dr. Smith was a faculty

member at the University of Pittsburgh School of Medicine. Further assignments took them to Sicily and Ireland before Dr. Smith



retired in 2015.

"We wanted to do this because we believe in Baptist Homes Society's mission," said Dr. Smith.

"We also believe it's important to give something back, especially when it involves God and young people, since we know how hard both work!"

Two other anonymous pledges are also irrevocable entrance fee refunds. One pledge of \$676,000 serves as the lead gift for the \$3 million Providence Point chapel and chaplaincy capital campaign. The donors wanted to do something significant in appreciation for all of the blessings they have received.

Another Providence Point couple also made an anonymous \$100,000 irrevocable campaign pledge from the same source.

These gifts follow on the heels of two other generous commitments to support Baptist Homes Society's mission: a 10-year \$500,000 pledge by **John and Becky Surma** in 2014 to enhance the Baptist Homes campus, and the first \$100,000 irrevocable entry fee refund pledge by **Carl and Nancy Schrock** in 2015, being directed to our Samaritan Fund for Resident Assistance. To learn how you can support BHS' mission, visit www.bhf.plannedgiving.org or call Baptist Homes Foundation at 412-489-3260.

Donors thanked, campaign for chapel announced



Pittsburgh History & Landmarks Foundation Director of Historical Collections Albert M. Tannler explained the historical significance of the stained glass windows that have been donated by Larry and Mardi Jackley.

Baptist Homes Foundation took advantage of the annual gathering of many of the organization's most dedicated supporters to announce the official start of a \$3 million capital campaign to build a chapel on its Providence Point campus and to endow the organization's chaplaincy program.

At the event, **Jack Miller**, Vice President of Development for the Foundation, announced that the Foundation had already reached nearly half of its goal.

The luncheon was held August 31 at LeMont Restaurant and was underwritten by Laurel Capital Corporation and one other anonymous donor. The event honors giving club members who make a leadership gift during the previous year or have included Baptist Homes Foundation in their estate plan. This year, about 175 major donors were recognized and joined in celebrating the launching of the public phase of the

organization's \$3 million capital campaign.

Thanking those who give

Guests enjoyed lunch and heard about the generous legacy gifts and pledges that have made the the capital campaign possible. They were also some of the first to learn the fascinating story of the historic stained glass windows, and that they were presented as a gift for the future chapel. *(See next page.)*

Challenge grant met by Board

Chair of the Baptist Homes Foundation Board of Directors **Brian Gongaware** also announced that every member of the Baptist Homes' Society and the Foundation

Boards had made a gift to the capital campaign. Combined, their pledges and gifts totaled nearly \$150,000. This is significant because it qualifies Baptist Homes Foundation to receive a \$50,000 challenge grant. The grant was issued by an anonymous friend who wanted to encourage sacrificial giving on the part of board members.

"We want the community to know that we endorse this project personally as well organizationally," said Baptist Homes Society Board Chair **Jan Wenzel**, "and actions always speak louder than words."

Gongaware concurred, stating, "We have been blessed to be able to serve the South Hills region for more than a century. It is only fitting that

we complete our Providence Point community with an appropriate space to honor the One who made it possible." 🌿



Donors at the luncheon include friends, volunteers, residents, and staff who also enjoyed the view. (l to r) Michelle Getchell, Robert Moore, Barbara Ryan, Myrna Kreischer, Wilfred and Cathy Luck and Pat Furner.

Historic windows to be centerpiece of chapel

PROVIDENCE CHAPEL BRINGS NEW LIFE TO HISTORIC STAINED GLASS WINDOWS

When South Hills residents Larry and Mardi Jackley came upon three stained glass windows at a 2014 auction, they did not have any idea that they were about to save an artistic treasure and an important piece of Baptist Church history. However, once the couple knew what they had acquired, they had an idea about what they could do next.

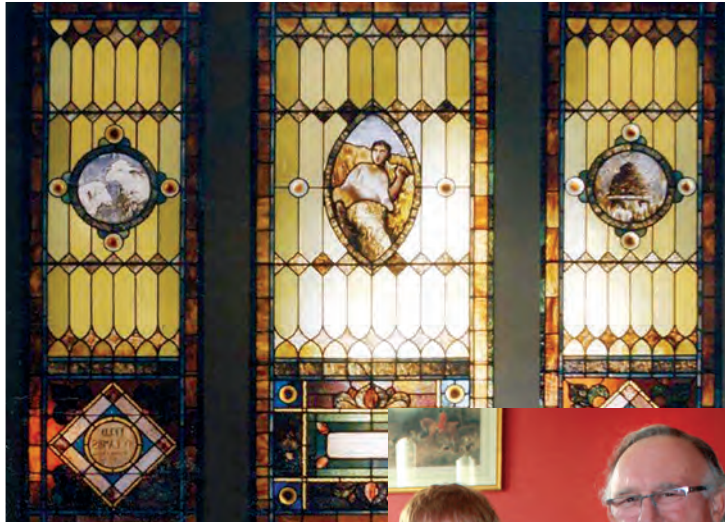
“We called Baptist Homes Foundation to see if they could put them to good use,” said long-time Baptist Homes Society Board member **Larry Jackley**. “And that’s just the beginning of the story.”

It turns out that the windows were commissioned in 1894 from Rudy Bros. & Reich for the First Baptist Church of Carnegie (also known as Mansfield Street Baptist Church).

According to Albert M. Tannler, historical collections director of the Pittsburgh History & Landmarks Foundation and author of *Charles J. Connick: His Education and His Windows in and Near Pittsburgh*, these windows are “an extraordinary find and perhaps the first example of a privately commissioned Rudy work.” Original invoices associated with their purchase have also made it possible to determine when partner Valdemar F. Reich left the company—something that was previously unknown.

John W. Kelly, owner and founder of Kelly Art Glass and a prominent Rudy Bros. & Reich glass restorer, estimated that it would take \$25,000 to completely restore the windows, but says “doing so would not only save a rare piece of stained glass history, but reuse it for future generations to appreciate.”

Once the significance of the windows was determined, Baptist Homes Foundation submitted a



The windows (above) predate the incorporation of Baptist Homes Society by 16 years and may have gone unnoticed except for Mardi and Larry Jackley (right) who discovered them at an auction.



proposal to a preservation foundation requesting restoration funds so that a reutilization plan can be developed and the restored historic windows incorporated into the new Providence Chapel sanctuary, complemented by six contemporary stained glass windows reflecting different stages of Judeo-Christian history.

“We couldn’t be more excited about our gift,” said Mardi Jackley. “The windows are related to Baptist history, which is the faith tradition

upon which Baptist Homes Society’s two campuses are founded. It just seems right that their new home be connected in some ways to their original home.”

The same can be said for the Jackleys, who recently placed their deposit on a Phase II apartment. 🍀

Our history on the drawing board

In June, Colorado architect Richard Wolfe sent some of the original architectural drawings for the Baptist Homes’ skilled nursing center which was built in 1950. The drawings were made by Mr. Wolfe’s grandfather, Lawrence Wolfe, who was the principal architect for the project. The drawings were all hand drawn and have already proven to be helpful as continuing efforts are made to upgrade the campus.

This is just one example of how gifts of tangible personal property can assist Baptist Homes in fulfilling its mission. We thank Mr. Wolfe for this kind gift. 🍀

What's new at *Baptist* HOMES

Live gracefully.



Volunteer smiles

Many of Baptist Homes' 120 or more volunteers brought their friendly smiles to the annual Volunteer Appreciation Banquet held in the Baptist Homes dining room in April. Guests were invited to take advantage of a photo booth along with various props and accessories—a great opportunity for Baptist Homes to say thanks and to put smiles on the faces of those who do that so frequently for our residents.



Summer picnics and shaved ice

Tucked amid the walls of Baptist Manor and the Baptist Homes Personal Care Residence and Nursing Center lies a patch of green space where blooming flowers and plants attract butterflies and wild canaries. A quiet pathway, benches, a gazebo that provides shady privacy, and a large canvas tent serve

as gathering places for residents, staff, family and friends once summer arrives. The Baptist Homes courtyard is a great spot for picnics, celebrations and relaxation. On a 90 degree day in July, activities staff even scheduled a visit by a Hawaiian shaved ice truck. The truck dispensed shave ice for residents, staff and volunteers. Staff and volunteers also delivered the icy treats to residents' rooms. It was estimated that about 250 shaved ice treats were eaten that day.



Visiting Phipps

A trip to Phipps Conservatory and Gardens is always a popular excursion. Activities staff and volunteers accompany small groups of residents to see the latest show and stroll through the gardens, on an outing that is delightful for all.



(left) April Clark adds flavoring to shaved ices before taking to residents; (top) Lorraine Bruni, Don Kleinhample and Judy Price pose in the photo booth; (above) Judy Hirshberg, Franca Sastiani, Frances Lacher and Mary Tatangelo visit Phipps Conservatory.



(left) Auxiliary members Cathy Luck (Treasurer) and Janet Pearson oversee the basket raffle during the luncheon while (below) Auxiliary Chair, Sally Barnett



greet guests and thanks them for supporting the Auxiliary's invaluable work.

Auxiliary luncheon a success—again

About 80 people attended the Annual Baptist Homes Auxiliary Luncheon on May 10, 2016. The event continues to impress guests with great food, entertainment, raffles and more. The Auxiliary, which has been in existence since 1943, holds several fundraisers throughout the year to support the Samaritan Fund for Resident Assistance and other needs of the community.



Queen for a Day

At Baptist Homes, the week of Mother's Day is also the time for the popular "Queen for the Day" event. On May 13, the Activity Room was transformed into a photography studio, make up studio and nail salon during this special day for pampering and fun, as the women of Baptist Homes took advantage of manicures, make-up, music and even posed for glamor shots. 🌸

(below) Richard Carlins and his mother Jean Carlins enjoyed Queen for a Day festivities.

Pie in the Face for a good cause

Baptist Homes Society held a fundraiser for the Pittsburgh Chapter of the Leukemia & Lymphoma Society at its campuses in August as part of its involvement in the Light the Night Walk in memory of former employee **Tom Keifner**. Staff were encouraged to buy "pies" to throw at willing management staff. Providence Point raised \$300 during a comical event on August 5 when five directors and **Al Allison** ambushed pie-tossers with Silly String.

The following week, Baptist Homes hosted a Pie Toss and raised \$275.



Participants and spectators shared many laughs, enjoying this fun way to end the work week. The Pie Toss and other campus events support the organization's team in the Light the Night Walk.

Providence

P O I N T

Where active seniors and a vibrant lifestyle
create a unique living experience.

A special 4th of July tribute and gift



(above) The painting of George Washington Crossing the Delaware; (right) Mr. and Mrs. Schrock.

A standing-room-only crowd gathered in the Chartiers Room on July 3 to participate in an Independence Day program honoring George Washington. At the front of the room on an easel was a copy of the famous painting of George Washington Crossing the Delaware. The event, hosted by residents **Cleon and Vera Jane Cornes** and **Bill and Carol Beggs**, included music, readings, and commentary. Toward the end of the program, **George Cahill** announced that the painting before them was a gift from **Carl and Nancy Schrock**, and it would soon be hung over the fireplace in the Washington

Room.

The painting of Washington, depicts the historic crossing of the Delaware River on the night of Dec. 25, 1776. The original hangs in the Metropolitan Museum of Art.

Providence Point's copy hangs above the mantle in the room named after our first president.



Barbecues, beer tastings and summer

When summertime comes to Providence Point, so does great outdoor dining and entertainment. Providence Point offers several events like lobster bakes, Sunday concerts, open grills, and craft beer tastings. On July 10, Dixie Doc and the Dixieland Allstars entertained outside the Neville Room, their music bringing residents to the courtyard and to their balconies. Summer outings include excursions to restaurants, wineries, and shopping venues.

Cheryl Rastetter, Director of Dining Services, notes, "There are special events throughout the year, but nothing beats a beautiful summer afternoon in the courtyard.



Carol Miller, Ruth Westerman, and Ron Feller and his great granddaughter enjoy a concert.



Centenarian celebration

It's a special occasion when someone celebrates their 100th birthday—and even more special when it's long-time resident, **Virginia Mason**. **Mrs. Mason** moved to Providence Point when it opened in 2009. She was just 92! Now, she is the first original resident to celebrate her 100th birthday. She enjoyed the fanfare on July 19 with staff, family and volunteers.

Bocce's a hot sport

Bocce season is in full swing as teams play and practice for the tournament that will take place toward the end of the summer. Since the court was put in place five years



ago, it has been heavily used. Experienced players and novices alike will end the season with a tournament and party.

A visit to Baptist Homes



Nine Providence Point residents toured the Baptist Homes campus on July 20, 2016. Some

were surprised to see that the care provided in the nursing center of the century-old Baptist Homes campus is not much different than care provided in Providence Point's healthcare center.

"The employees have a sincere concern for the residents they are serving," said **Peggy Doyle**.

"What was really surprising was that when we

randomly asked some of the employees how long they had worked at Baptist Homes,

not one of them had been there less than eight years."

The tour is part of an ongoing effort by Baptist Homes Foundation to increase awareness of the history, mission and vision of the organization.

The first wedding

Providence Point, has hosted all sorts of events—from art exhibits to pig roasts. But it wasn't until Katie Marcinko, the granddaughter of residents **Andy** and **Joan Marcinko**, was betrothed to Rob Simcik at an intimate celebration in the Chartiers Room, that a wedding was held. **Mrs. Marcinko** explained, "Robbie was promoted to a position in Australia, and the couple wanted to marry prior



to moving. Providence Point not only accommodated the event on short notice, but created a wonderful day for the families. Even the wedding planner noted that Providence Point's staff and venue were outstanding." 🌿

(Clockwise from top left) Mrs. Mason surrounded by volunteers, staff, and family; Mickey Tehan and Sally Lindsay playing bocce; Joan and Andy Marcinko with granddaughter Katie and her new husband Robbie Simcik (Photo by Heather Tabacchi); Vivian Bronder, Barbara Steen, Nancy Laitta, Peggy Doyle, Kathleen Dougherty and Lee Farmer enjoying the beer sampling.

Milestones and more

Baptist Homes Society has reorganized its corporate structure in accordance with its strategic plan to take advantage of future opportunities for stabilization and growth.

In consideration of various future initiatives in our strategic plan, the new corporate structure includes the creation of a parent corporation, Baptist Senior Services, which will have ultimate authority over all subsidiary corporations. Currently, the two subsidiaries are Baptist Homes Society and Baptist Homes Foundation.

Baptist Homes Society's current operations will not change and Baptist Homes Foundation becomes a subsidiary of Baptist Senior Services. Moving forward, other subsidiary corporations can be established quickly and simply as needed for new initiatives.



Providence Point's Healthcare Administrator **Sharon Silkroski** was one of seven individuals invited

to speak on behalf of Baptist Homes Society about her experience with the Pennsylvania Restraint Reduction Initiative (PARRI) at the Capitol Rotunda in Harrisburg on Tuesday June 9, 2016. Kendal Outreach, which administers PARRI, announced that the use of restraints

in state nursing homes dropped to 0.7% in 2015, and restraint use has dropped 97.6% since 1996.

Baptist Homes Society has implemented a new safety incentive program for the fiscal year beginning July 1, 2016. A raffle of PTO hours is being held on each campus for every month there are no lost-time injuries. Baptist Homes Society was glad to award the first raffle winnings to Nancy Maynard at Baptist Homes and Brittany Zapf at Providence Point for July.



Staff and their families were invited to attend a special evening with the Washington Wild Things in June. The event, planned by the Baptist Homes and Providence Point Employee Recognition Committee, included a double header, picnic dinner, and a visit by the mascot. 🍀

Your words say it all

Baptist Homes Society relies on the generosity of all who support our mission to ensure that our legacy of benevolence and quality care continues. Your donations are always so gratefully appreciated. Often, gifts to the Samaritan Fund for Resident Assistance, the Employee Appreciation Fund, or for other identified needs, are also accompanied by kind words and compliments.

There is no greater gift than the

knowledge that we are meeting our residents' needs and fulfilling our mission of providing the highest quality of care.

Two recent notes show us that we are making a difference for residents and families. We are proud to share these notes with our supporters and thank you for placing your trust in us. 🍀

"The various staff members—from top to bottom—were terrific; always caring, very prompt and sensitive to my aunt's medical and practical needs. In this day and age where everyone complains about 'poor service,' I thought a letter about the exceptionally good service my aunt received was in order. On behalf of our entire family, thank you."

"You never get a second chance at a first impression! From our first meetings, until the end, you all have been exceptional. Always a smile, always a kind word. You made mom feel as if she were at home. She was a special person and you always made her feel good. You have a gift that many do not."



A free, fun day of entertainment and ideas to help you live well!

Senior Health & Wellness Fair

10 am-2 pm

Tuesday, Sept. 20, 2016 at The Galleria of Mt. Lebanon

1500 Washington Road

- 9:30 AM - Mall walk with Providence Point's Wellness Director
- 11:00 AM - Senior Fashion Show with residents of Baptist Manor and Providence Point modeling fashions from Chico's, Jezebel, and other Galleria merchants
- 12:00 Noon - Pittsburgh PALS Barbershop Quartet
- 1:00 PM - Everyday fitness with Jessica Higgs, CWWS
- Flu and pneumonia shots, hearing assessments, and health screenings
- More than 80 exhibitors with lots of raffles and giveaways

EXHIBITORS INCLUDE

- | | |
|--|---|
| A&M Healthcare Agency | Mt. Lebanon Police Department |
| American Healthcare Group | Vibrant Images |
| Animal Rescue League | Visiting Angels |
| Coventry Health Care | Washington Symphony Orchestra |
| Cura Hospitality | Westbrook Pharmacy & Surgical Supply |
| Emmaus Community | Western Pennsylvania to Good Health and many more |
| Gallagher Home Health | |
| HealthSouth Rehabilitation Hospitals of Pittsburgh | |
| Hearing Unlimited | |
| Home Instead - South Hills | |
| Life Service Providers | |
| Liken Home Care | |
| Medicare Specialists of Pittsburgh | |
| Magee Women's Hospital | |
| Medical Rescue Team | |
| South Authority | |
| Medicare Specialists of Pittsburgh | |

Special thanks to:



For more information, call 412-350-9654



Community program offers free education

For the past several years, Baptist Homes Society has offered continuing education programs for registered nurses, social workers and activities professionals. We offer eight two-credit classes a year, providing free, relevant education about topics that are of interest to those in the senior living and healthcare industry. Though they are designed for professionals, they are open to anyone who is interested in learning more about current topics from area experts.



Providence Point Activity Coordinator Porchia Walton and Activity Director Elaine Overend present a program in August.

All programs begin at 4:30 pm and are about two hours in length, with registration starting at 4:00 pm.

We also offer tours of our

communities prior to the program. Baptist Homes Society relies on associated companies to support the cost of these programs and thanks Beinhauer Family Funeral

Homes, Gallagher Home Health Services and VITAS Healthcare for supporting the current series.

For more information, contact Sue Lauer at 412-350-9654.

Supporting those with Alzheimer's Disease and Other Dementias

presented by Paula Strepay, Client Inquiry Specialist at Home Instead Senior Care

Wednesday, October 19, 2016

Baptist Homes

Registration 4:00 pm

Presentation 4:30 to 6:30 pm

Find answers to questions about dementia, including risk factors, symptoms, behaviors, and how it is diagnosed. You will also learn about the significance of remaining active and maintaining excellent self-care as part of treatment.

The Medical Cannabis Industry in Pennsylvania

presented by Patrick K. Nightingale, PA Medical Cannabis Society (PAMCS) Executive Director and Heather L. Shuker, Director of National Partnerships/Events Coordinator for PAMCS

Wednesday, November 16, 2016

Baptist Homes

Registration 4:00 pm

Presentation 4:30 to 6:30 pm

Learn about the history of medical cannabis in the USA; Act16, Medical Marijuana Act and what it means; and the necessity of patient and physician participation. Hear the story of one family's journey toward better quality of life.

Great golf and generous friends

THE 23RD ANNUAL BAPTIST HOMES FOUNDATION CHARITY GOLF INVITATIONAL

In its 106 years of existence, Baptist Homes Society has never asked anyone living in our senior communities to leave because they had exhausted their resources through no fault of their own. This was a commitment made by our founders and remains one of the organization's core values today. The annual Baptist Homes Foundation Charity Golf Invitational is the primary special event that supports that goal.

This year marked the 23rd year for the golf outing which was held at Allegheny Country Club on May 23. The major sponsor was Transport U, whose three foursomes joined 32 others in a four-person shamble.

"We were also honored to have Carol Semple Thompson as our honorary chair for the fourth consecutive year," said **Al Allison, Jr.**, President and CEO of Baptist Homes Society. "Her presence enriches the historic Allegheny Country Club and endorses the importance of our mission."

The sold-out event featured lunch, closest to the pin, long drive and putting skill contests and a hole-in-one competition sponsored by Bobby Rahal® Automotive Group. An additional 70 Baptist Homes Society supporters joined the group for cocktails, hors d'oeuvres, dinner, and a silent auction.

A program featuring guest speaker **Emily Doublet** told her story about the Samaritan Fund for Resident

Assistance. Following a bout with cancer which depleted her savings, Emily became a Samaritan Fund recipient. She expressed her gratitude for the organization's commitment to benevolent care and for allowing her to continue living in her home with the day-to-day assistance that she needed.

"This is Baptist Homes Society's vision and mission fulfilled," said **Al Allison**.

"Uplifting seniors like Emily and allowing each of them to enjoy the most fulfilling life possible—that is our mission. Without our sponsors, participants and volunteers, this event wouldn't be possible, and the nearly \$100,000+ raised wouldn't be available to assist residents who have outlived their resources. That's why I want to offer special thanks to all of our sponsors, but especially Transport

U, Curtis Long Term Care Pharmacy Services, and Spectrum Consultants, Inc. who underwrote the majority of the cost of this event."

A complete wrap-up of the event, including pictures and prize winners, may be found at www.bhf.plannedgiving.org and www.BlackTie-Pittsburgh.com.

The 24th Annual Baptist Homes Foundation Charity Golf Invitational has already been booked to return to Allegheny Country Club on Monday, May 22, 2017. We hope you'll participate. 🍃



Carol Semple Thompson, center, with members of the Joerns foursome—Greg Kennis, Lance Huber, James Stossel and Bruce Miller.



Fast greens and friendly conversation were the norm at the 23rd Annual Baptist Homes Foundation Charity Golf Invitational.



23rd Annual Baptist Homes Foundation Charity Golf Invitational

Baptist Homes Foundation and Baptist Homes Society thank the following sponsors for their support.

DOUBLE EAGLE SPONSOR
Transport U

EAGLE SPONSORS
Curtis Long Term Care Pharmacy Services
Spectrum Consultants, Inc.

BIRDIE & LONG DRIVE SPONSORS

Dollar Bank®
Genesis HealthCare LLC
Joerns® Healthcare
rlps architects
STORExpress
UPMC Health Plan
Woodville House Kitchen & Bath Design Center

LUNCH SPONSOR
Woltz & Wind Ford

HORS D'OEUVRES SPONSOR
Brace Flooring, LP

DINNER SPONSOR
Baptist Homes Auxiliary

BEVERAGE CART SPONSOR
Castle Shannon Shop'n Save

BAG DROP SPONSOR
Benyo Painting, LLC

PUTTING CONTEST SPONSOR
McKinley Carter Wealth Services

We also acknowledge and thank all those who supported the event as tee sponsors, golfers, donors and dinner guests.

Thank you!

Congratulations to our MVPs



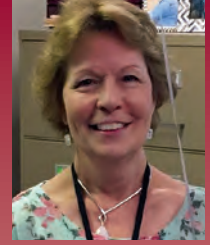
Charles Njunge
January 2016



Diami Diallo
February 2016



Erin Engel
March 2016



Holly Schmidt
April 2016

BAPTIST HOMES MONTHLY MVPS



Linda Venturella
May 2016



Daria Goins
June 2016



Keith Bush
July 2016

Through an employee recognition program called Mission and Vision Personified (MVP), our outstanding staff members are nominated and recognized for their contributions to Baptist Homes Society on a monthly basis. The Employee Recognition Committee (ERC) oversees this important program in which dedicated staff are selected for their efforts by their peers.

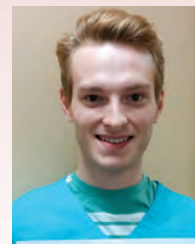
In addition to the MVP program and an annual event, the ERC celebrates excellence through special activities for staff on a monthly basis. Congratulations to the staff members shown here for their commitment to the mission and vision of Baptist Homes Society. 🌿



Brian Devlin
January 2016



Patrick Cain
February 2016



Nathaniel Beers
March 2016

PROVIDENCE POINT MONTHLY MVPS



Renee Stoltz
April 2016



Tiffany Wright
May 2016



Roumian Kamenov
June 2016



Pam McMullen
July 2016

Wish List

Baptist Homes Society communities provide the highest quality of services. But, like any family, we can always wish for things that would make life easier, a little better, or let us do even more. That is why we developed our wish list. If you'd like to help Baptist Homes Society address any of the following needs, contact the Foundation office at 412.489.3260. There

are recognition opportunities as well as ways to give anonymously. Here are a few current priority needs:

- Samaritan Fund Endowment (\$500,000)
- Vital sign monitoring cart (\$2,500)
- Brain health speaker fee (\$1,500)
- Dog therapy (\$1,000)
- Laptop computers (\$800 each)

Gifts in Honor

Baptist Homes Foundation • January 1, 2016 through June 30, 2016

Ms. Michelle Azinger

Ms. Nadean B. Bovard
Mrs. Margaret G. Doyle

Baptist Homes Manor Staff

Anonymous

Baptist Homes Personal Care staff for their commitment to the residents

Mrs. Janet M. Wasko

Baptist Homes Resident Aides

Ms. Jeanne M. Martin

Pabi Bhattarai

Ms. Mary Rose Nucci & Mr. Camine Nucci

Cathy Boyd

Ms. Diane Hughes

Timothy Branscum

Mr. Robert E. Dunbar

Mr. Matthew Cable

Mr. Robert E. Dunbar

Mr. Richard Calhoun

Mr. & Mrs. Robert K. Wagner

The Christman Family

Mr. & Mrs. Robert A. Christman

Ms. Cynthia Clinton

Mr. & Mrs. Charles J. Queenan, Jr.

Mr. Jason Dolby

Ms. Patricia A. Aiello &
Ms. Elizabeth L. Kobistek &
Ms. Diane Krause

Mr. Brian Colon

Ms. Paulette S. Kelly

Fred Faust

Ms. Alice M. Ducsay

Ms. Janet Ferrell

Mr. & Mrs. Paul W. Schaughency

Denise Fleming

Ms. Bonnie A. Wilson

Nick Gazda

Ms. Alice M. Ducsay

Ms. Sarah Mae Gross

Ms. Nadean B. Bovard
Dr. & Mrs. Cleon L. Cornes

Mr. Jeffrey Harshman

Ms. Karen K. Johnson

Ms. Lauren Hergenroeder

Mrs. Margaret G. Doyle
Ms. Karen K. Johnson

Leigh Hill

Mrs. Mary R. Gilligan

Megan Hulick

Mr. & Mrs. Samuel L. Lioon

Rumi Kamenova

Mrs. Mary R. Gilligan

Ms. Patty Kennedy

Miss Harriet W. Kistler

Ms. Mollie Kuns

Mr. Harry R. Rydstrom

Tina Kunsman

Ms. Diane Hughes

Peggy Lynch

Ms. Diane Hughes

Ms. Gina Manning

Providence Point Doctors

Mr. James Masilunas

Mr. Sherry Katsukisa

Ms. Kelli Jo Murphy

Mrs. Jessie Lee Farmer
Miss Harriet W. Kistler

Toby Ogunfowokan

Ms. Mary Rose Nucci & Mr. Camine Nucci

Maida Omeragic

Mrs. Mary R. Gilligan

Mrs. Margaret C. Pankratz

Anonymous

Alex Plotnikov

Mr. & Mrs. Samuel L. Lioon

Providence Point Staff

Mr. & Mrs. Harold R. Amos, Jr.

Providence Point Environmental Services

Mrs. Yvonne R. Amos

Providence Point Housekeeping Staff

Mr. Sherry Katsukisa

Ms. Veronica Raffaele

Ms. Delores Durica

Mr. Eric W. Rebholz

Mrs. Sara E. Lindsay

Stephanie Scibienski

Mrs. Mary R. Gilligan

Mr. Richard Shipley

Ms. Nadean B. Bovard

Karen Stewart

Ms. Bonnie A. Wilson

Crystal Sullivan

Anonymous

Mrs. Danette C. Terlecki

Mrs. Jessie Lee Farmer
Miss Harriet W. Kistler

Mr. Chris Toth

Mr. & Mrs. Andrew J. Marcinko

Mrs. Janet M. Wasko

Anonymous

Mr. Michael Weyrauch

Mrs. Sara E. Lindsay

Mary Ellen Williams

Ms. Diane Hughes

Gifts in Memory

Baptist Homes Foundation • January 1, 2016 through June 30, 2016

Mr. John "Jack" J. Bosley

Mrs. Jessie Lee Farmer
Mrs. Ruthe M. Fleming
Mr. & Mrs. Richard D. Hayes, Jr.
Mr. & Mrs. Robert I. Hossli
Mr. & Mrs. Richard D. Klaber
Mrs. Sara E. Lindsay
Mr. & Mrs. Andrew J. Marcinko
Mr. & Mrs. Jack Miller
Mr. & Mrs. Edward L. Reichard
Mr. & Mrs. John W. Stephen
Mrs. Joyce K. Taylor
Ms. Marilyn A. Walsh
Mr. & Mrs. Lewis Anthony Waterman
Mr. & Mrs. Richard V. Westerhoff

Mr. Douglas McConnell Christie

Mrs. Joan L. Scheinholtz

Mrs. Leona Cimino

Ms. Sarah M. Cimino
Ms. Lisa Latta
Ms. Mary Pat Wilhem
DiCarlo Family
Ms. Hilda Baudry
Great grandchildren of Leona (Antonio and Isabella Burkhart)
Great grandchildren of Leona (Troy and Mark Sigafos)
Great granddaughter of Leona (Ella Burkhart)
Mr. Thomas Cimino & Family
Mr. Daniel Cimino & Family
Ms. Christine Cimino
Mary Jean Cardamone & Family
Ms. Dorothy M. Hudak
Mr. & Mrs. Michael Poprik, III
Mrs. Judith M. Price
Ms. Kathleen Schostack
Mr. & Mrs. James E. Watrous, Jr.

Ms. Theodora Clawson

Mr. & Mrs. Richard D. Klaber

Mrs. Virginia A. Cobbey

Mr. Brett M. Cobbey

Mr. Dom Colarosa

Mrs. Laura E. Colarosa

Mrs. Grace D. Cupples

Mr. Joseph K. Cupples

Mr. Ronald Doyle

Mrs. Margaret G. Doyle (2)

Mrs. Amalie Ehrigott

Ms. Karen A. McDine
Ms. Erma A. Ott

Mrs. Catherine Emph

Mr. Ralph F. Mueller, Jr.

Mr. Robert Fahnestock

Mrs. Margaret G. Doyle

Mrs. Edna S. Humphreys

Mrs. Elizabeth H. Jachim

Mr. Hugh Jacox

Mrs. Dorothy J. Jacox

Mrs. Sylvia Klaczak

Ms. Marilyn A. Walsh

Mr. James W. Knepper

Mrs. Jessie Lee Farmer
Mrs. Ruthe M. Fleming
Mr. & Mrs. Robert I. Hossli
Mr. & Mrs. John W. Stephen
Mrs. Joyce K. Taylor

Mrs. Elizabeth Anne Knoell

Mr. & Mrs. Thomas B. Trebilcock

Mrs. Marilyn A. Koehnke

Mr. John R. Koehnke

Mrs. Agnes B. Kunzelman

Mr. & Mrs. Joseph P. Weber (2)

Mr. George L. Lyon

Ms. Marilyn A. Walsh

Mrs. Alice Anne Marocchi

Mr. Paul Marocchi

Mrs. Mary Watson McFadden

Mr. & Mrs. Robert N. Schapiro
Mr. & Mrs. John W. Stephen

Mrs. Phyllis B. Monk

Mr. & Mrs. Robert I. Hossli
Dr. Edward W. Jew, Jr.
Mr. & Mrs. James W. Knepper, Jr.
Mrs. Sara E. Lindsay
Mr. & Mrs. John W. Stephen

Mr. Richard J. Nagel

Ms. Marinell Nagel

Mrs. Dorothy M. O'Connell

Ms. Rosanne O'Connell

Mrs. Mary Jane Olszewski

Mr. & Mrs. Charles D. Bigler

Mrs. Catherine M. Oltcher

Mr. Lee A. Oltcher

Mrs. Vivian B. Overstreet

Rev. Dr. Robert E. Overstreet

Ms. Stella Parsons

Mr. & Mrs. James R. Parsons

Mrs. Ellen M. Pruitt

Mr. & Mrs. David Bluestein
Ms. Elizabeth E. Brumbaugh

& Mr. Gregory P. Hackett

Beth & Scott Cahill
Ms. Carol R. Fierst
FNB Private Banking Group
Mr. & Mrs. M. Dean Mosites
Mosites Construction Company
Mike, Amy, and Nicholas Nedzesky
Cecil, Marie, Lauren Shaffer
Ms. Susan S. Spear & The Spear Family
Ms. Laura Stotler
Mr. Joseph Wattick

Ms. Wanda Rachuba

Mr. & Mrs. Donald W. Dietz
Mr. & Mrs. Robert R. O'Connor
Ms. Linda Phillips
Ms. Mary Ann Scheib
Mr. & Mrs. William R. Seath
Ms. Jeanne Speranza

Ms. Flora P. Rathburn

Mrs. Ruthe M. Fleming

Ms. Betty L. Reid

Mr. & Mrs. Herk C. Henninger

Mr. Ron Reid

Mrs. Margaret G. Doyle

Ms. Virginia Rhyner

Mrs. Augusta S. Miller
Ms. Mary H. O'Connell

Dr. Foster P. Rutter

Fink & Snyder Families
Mr. Steve & Mrs. Susan Kyper
Mr. Charles S. Nyswaner
Mr. Dennis H. Taylor
The Hillman Company

Hazel T. Samples

Mr. & Mrs. William R. Samples

Mrs. Constance F. Silipigni

Mr. & Mrs. Robert I. Hossli

Miss Vera R. Smith

Mrs. Lorraine E. Whitehouse

Ms. Evelyn A. Spring

Mrs. Priscilla S. Utzig

Rev. Eugene H. Stewart

Mrs. Delores S. Stewart

Mrs. Lillian Zoeller

Mr. & Mrs. Robert W. Krepp

Great care has been taken in preparing this list. If we have inadvertently omitted the names of one of our supporters, our apologies are offered along with our desire to correct the information. Please contact 412.489.3260 if that has been the case.



489 CASTLE SHANNON BOULEVARD
PITTSBURGH, PA 15234-1419

ADDRESS SERVICE REQUESTED

NONPROFIT ORGANIZATION
US POSTAGE
PAID
PITTSBURGH, PA
PERMIT NO. 1468

Serving seniors of all faiths since 1910.
Visit us at www.baptisthomessociety.org

SAVE THE DATE AND JOIN US FOR THESE UPCOMING EVENTS:

Join us
for the
**Baptist Homes Society
Senior Health
& Wellness Fair**
Tuesday, September 20
at the
Galleria of Mt. Lebanon
10:00 am - 2:00 pm

For information,
see page 11, or contact Sue Lauer
at 412.350.9654 or
slauer@baptisthomes.org

Walk with us!
**Baptist Homes Society
team will walk in memory of
Tom Keifner
Light the Night**
to benefit the
Leukemia & Lymphoma
Society
Wednesday, October 5
at 5:30 pm at Heinz Field

To register or to support a walker,
go to www.LLS.org, select the
Baptist Homes Society team on
the Pittsburgh Light the Night
page, and join our cause.

Baptist Homes Society
Continuing Education Series for
Social Workers, Nursing Home
Administrators and Registered Nurses
**Supporting those with
Alzheimer's Disease and
Other Dementias**
presented by Paula Strepay, Client Inquiry
Specialist at Home Instead Senior Care
**Wednesday,
October 19, 2016**
Baptist Homes
Registration 4:00 pm
Presentation 4:30 to 6:30 pm

For information, see page 11, or contact
Sue Lauer at 412.350.9654 or
slauer@baptisthomes.org